



Follow Your Heart

MODEL: "Follow Your Heart" uses DMC floss (2 threads except where noted), Weeks Dye Works and Gentle Art. We added an ADORABLE little heart button from Just Another Button Company, and if we'd had time to stitch it would have done it on Zweigart's Belfast 32-linen in antique white. As always, feel free to change the colors and fabrics - and my opinion is to ALWAYS follow your heart and not your head.
ENJOY and HAPPY STITCHING and remember to always LOVE!!!! ~ Jennifer

Design Area

67w x 53h

14 count (28 ct linen) 4.8" x 3.8"
 15 count (30 ct linen) 4.5" x 3.5"
 16 count (32 ct linen) 4.2" x 3.3"

Symbol	Color	DMC	Anchor
★	Christmas Red, Bright	666	46
m	Melon, Light	3708	31
♡	Bright White	B5200	1

Symbol	Weeks Dye Works
♡	2269 - Liberty

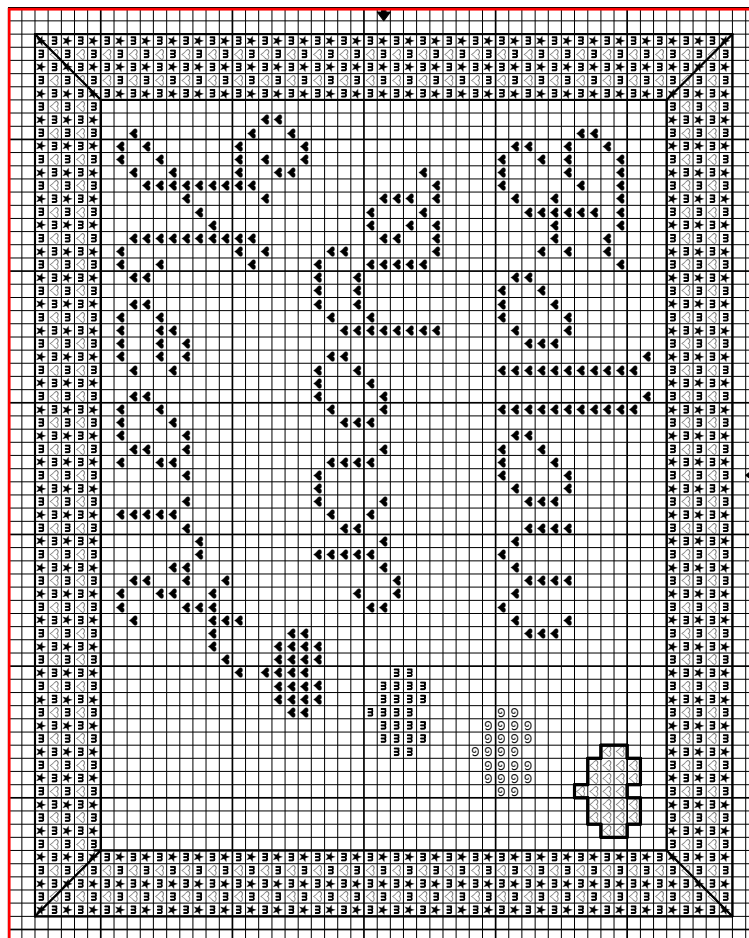
Symbol	Gentle Arts
⊙	Porcelain



Backstitch

Outline border (inside and out) with Weeks Dye Works "Liberty"
 Outline top heart with DMC 666 - Christmas Red

Attach JABC Sweetheart button #4434.B in peach wherever you choose. The picture is merely a suggestion.



Ladybug Lane Designs
 50 Barrett Parkway, Suite 1200 #208
 Marietta, Georgia 30066

FAX: (678) 354-1290
 Email: jennifer@ladybuglane.com

www.ladybuglane.com

LBL - Comp. February 2006
 "Follow Your Heart" designed by Jennifer Cooke-Rabig
 Copyright © 2006 Ladybug Lane Designs, Inc.